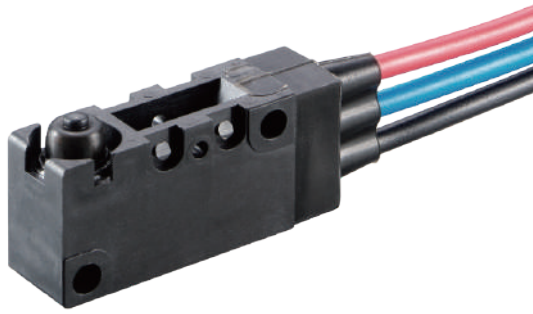
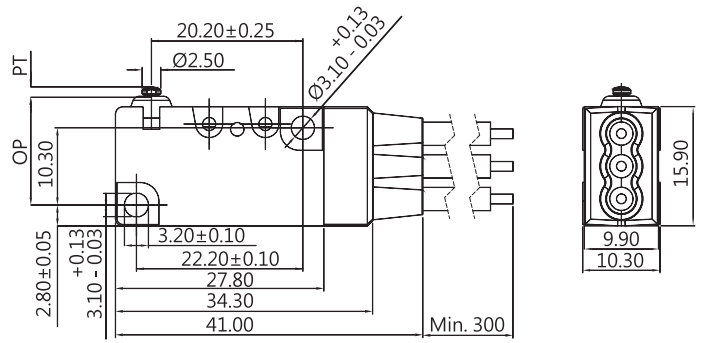


WATER PROOF SWITCHES



DIMENSIONS

Unless otherwise specified, a tolerance of $\pm 0.4\text{mm}$ applies to all dimensions.

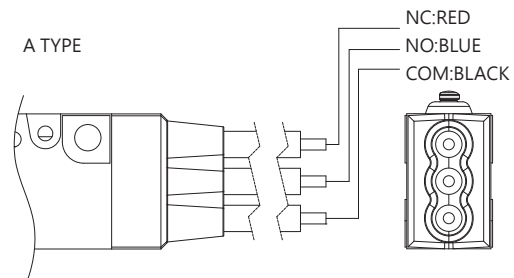


VW1 (IP67) SERIES

APPLICATIONS

Alarm devices, Home security, Time recorder, Air conditioner, Food processor, Juice maker, Lawnmowers, Mixer, Central water heater, Industrial apparatus, Special forklifts, Special vehicles

TERMINAL TYPES



※ For the specification, please refer to VW1 SERIES. ※

THE SELECTION OF RATING & FORCE

MODEL	Rating	D	J	L	S	H
VW1	0.1A	*	*	*	*	*
	3A	*	*	*	*	*
	6 A	*	*	*	*	*
	10 A				*	*

NOTE : The Symbol " * " to represent the result is accepted

CERTIFICATE INFORMATION

Model Name	UL	ENEC
VW1-P1	0.1RA 30VDC 0.1RA 125/250VAC	0.1A 30VDC 0.1A 125/250VAC
VW1-03	3RA 30VDC 3RA 125/250VAC	3A 30VDC 3A 125/250VAC
VW1-06	5RA 30VDC 6RA 125/250VAC	5A 30VDC 6A 125/250VAC
VW1-10	5RA 30VDC 10RA 125/250VAC	5A 30VDC 10A 125/250VAC

ORDERING INFORMATION

V	W	1	-	P	1	S	0	-	0	0	A	0	-	D	B	0	0	1	-	Z
SERIES PREFIX	CODE	RATING CURRENT	CODE	OPERATING FORCE	CODE	ACTUATOR LEVER FIXED	CODE	ACTUATOR TYPE	CODE	TERMINAL TYPE	CODE	CIRCUIT ARRANGEMENT	CODE	AWG TYPE	CODE	UL NUMBER	SERIAL CODE	ROHS CODE		
	10	10A 125/250VAC	H	HEAVIER	0		00	No Lever	A		0	S.P.D.T	C	16	B	UL1015				
	06	6A 125/250VAC	S	STANDARD	1		01				1	S.P.S.T NO	D	18						
	03	3A 125/250VAC	L	LIGHT	2		02				2	S.P.S.T NC	E	20						
	P1	0.1A 125/250VAC	J	SLIGHT			03						F	22						
			D	LIGHTNESS			04						G	24						
							05						H	26						
							06													

#NOTE				
ITEM	RATING CURRENT	OPERATING FORCE	AWG TYPE	LEADS WIRE
1	Code : P1	H, S, L, J, D	16, 18, 20, 22, 24, 26	Min.30 cm
2	Code : 03	H, S, L, J, D	16, 18, 20	Min.30 cm
3	Code : 06	H, S, L, J, D	16, 18	Min.30 cm
4	Code : 10	H, S	16	Min.30 cm

CAUTIONS:

注意事項

1. To secure the switch, please use an M2.3 small screw on a flat surface and tighten with plane washers or spring washers to securely mount the switch, using a maximum torque of 0.59 N•m.
若使用定位孔型式，請使用M2.3小型螺絲固定在平面上，並使用平墊圈或者彈性墊圈以便安全的鎖固開關，鎖固扭力請勿超過0.59 N•m.
2. Do not handle the Switch in a way that may cause damage to the sealed rubber & switch sealing.
使用開關時，請勿損壞開關防水矽膠罩及開關防水膠。
3. To ensure the best performance of the switch, when handling/installing the switch, please do not apply uneven pressure to the direction indicated by the arrow in (Figure -1). Any uneven pressure or pressure direction other than the operating direction might be harmful or damage the switch performance.
為確保開關正常運作，安裝及取用開關時，請勿直接施加壓力在(圖-1)中箭所指示的方向。如圖所示，任何不對稱的壓力或作動方向以外的壓力都不適在開關按柄上。
4. Wires should not be dragged.
使用帶線型式時，請注意避免拉扯線材。
5. Do not exceed the end position (EP) and over travel (OT). This could cause operation failure.
圖示設計按壓位置，請勿超過開關下死點及超出行程，以避免開關失效。
6. Avoid applying any grease/oil and chemicals on the switch rubber.
請避免沾附任何油脂或者化學物質在開關的矽膠防水罩上。

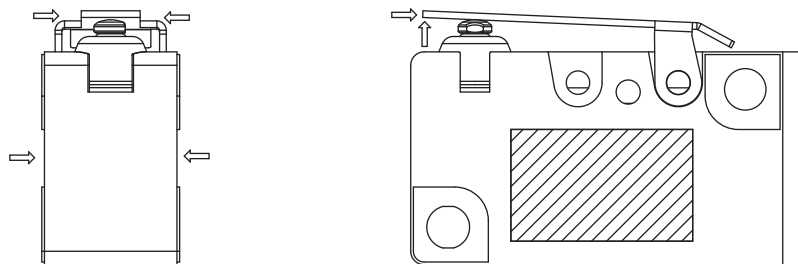


Figure-1