

## CM 微动开关 Micro Switch

### 特征 Features

- 引动器种类广泛,且有动作位置可调整之设计 (如CM1701)
- 高开闭容量(15A)
- 高精度度
- 广泛操作速度范围
- CM系列每一型式具有焊接端子,螺丝端子与快速端子可供选择
- 型号后面加A则为焊接端子,加C则为快速端子,空白则为螺丝端子
- Virus of actuators, action position is adjustable(such as CM1701)
- High switch on and off capacity(15A)
- High accuracy
- Wide range of operation speed
- Each type of CM series has solder terminal, screw terminal and tab terminal are selective
- Add A for solder terminal, add C for tab terminal, blank for screw terminal

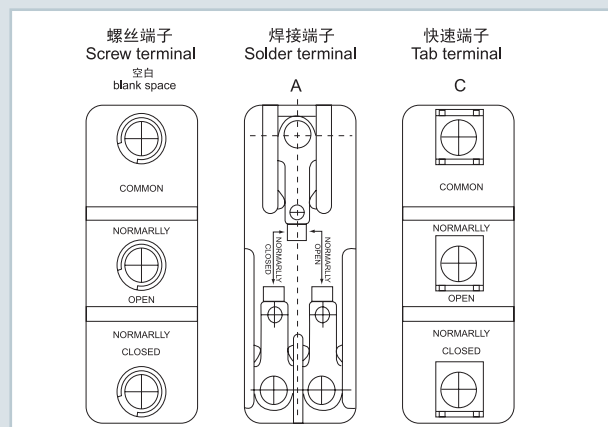
### 额定值 Ratings

额定电压 Rated voltage	非电感性负载 Noninductive Load (A)				电感性负载 Inductive Load (A)				突入 电流(A) Inrush Current	
	电阻性负载 Resistance Load		灯泡负载 Lamp Load		电感性负载 Inductive Load		马达负载 Motor Load		NC	NO
	NC	NO	NC	NO	NC	NO	NC	NO		
125VAC	15	3	1.5	15	5	2.5	30 以下 max.	15 以下 max.		
250VAC	15	2.5	1.25	15	3	1.5				
500VAC	3	1.5	0.75	2.5	1.5	0.75				
8VDC	15	3	1.5	15	5	2.5				
14VDC	15	3	1.5	10	5	2.5				
30VDC	6(2)	3	1.5	5	5	2.5				
125VDC	0.4	0.4	0.4	0.05	0.05	0.05				
250VDC	0.2	0.2	0.2	0.03	0.03	0.03				

### 特性 Characteristics

操作速度 Operation speed	0.01mm至1m/sec(锁住塞型) 0.01mm-1m/sec
动作频率 Operating frequency	机械:240次/分 电气:20次/分 Mechanical: 240 operations/min. Electrical: 20 operations/min.
接点电阻 Contact resistance	15mΩ以下(初期) 15mΩ max. (initial value)
绝缘电阻 Insulation resistance	100MΩ以上(在500VDC以下) 100mΩ min. (at 500VDC)
电介强度 Dielectric Strength	非连续端子间1,000VAC, 50/60Hz持续1分钟 1000VAC, 50/60 Hz for 1 minute between terminals of the same polarity 载电流与无载电流零件间1,500VAC, 50/60Hz持续1分钟 1500VAC, 50/60 Hz for 1 minute between current-carrying and non-current-carrying metal parts 端子和接地之间1,500VAC, 50/60Hz持续1分钟 1500VAC, 50/60 Hz for 1 minute between each terminal and ground
振动 Vibration	(*10至20Hz): 1.5mm 变振幅误动作耐久: 10至55Hz 10-55Hz, 1.5mm double amplitude
冲击 Shock	机械耐久:1,000m/Sec <sup>2</sup> (约100G'S) 误动作耐久:300m/Sec <sup>2</sup> (约30G'S) Mechanical durable: 1,000m/Sec <sup>2</sup> (about 100G'S) Malfunction: 300m/Sec <sup>2</sup> (about 30G'S)
周围温度 Ambient temperature	泛用型: -25℃至+80℃ 密封型: -15℃至+80℃ General purpose type: -25℃ to +80℃, Sealed type: -15℃ to +80℃
湿度 Humidity	泛用型: 85%RH以上 密封型: 95%RH General purpose type: 85% RH max., Sealed type: 95% RH max.
使用寿命 Life	机械:20,000,000次以上 电气:500,000次以上 Mechanical: 20,000,000 operations/min. Electrical: 500,000 operations/min.
重量 Weight	约22至58g About 22 to 58g

### 接点构成 Terminal Type



### 接点型式 Contact Form



## 动作特性 Operating Characteristics

型式 Models	CM1300	CM1301	CM1303	CM1305	CM1306	CM1307	CM1308	CM1309	CM1701	CM1702	CM1703	CM1704	CM1705	CM1743
OF最大 (Max.)	350g	300g	300g	350g	350g	350g	350g	350g	70g	160g	100g	160g	10g	160g
RF最小 (Min.)	114g	50g	50g	114g	114g	114g	114g	114g	14g	28g	22g	42g	3g	42g
PT最大 (Max.)	0.4mm	4mm	4mm	0.4mm	0.4mm	0.4mm	0.4mm	0.4mm	10mm	5mm	7.1mm	2.7mm	20mm	2.7mm
OT最小 (Min.)	0.13mm	1.6mm	1.6mm	1.6mm	1.6mm	5.5mm	3.58mm	3.58mm	5.6mm	2mm	4mm	2.4mm	5.6mm	2.4mm
MD最大 (Max.)	0.05mm	1.3mm	1.3mm	0.05mm	0.05mm	0.05mm	0.05mm	0.05mm	1.27mm	1mm	1.02mm	0.5mm	3mm	0.5mm
FP最大 (Max.)		20.6mm	31.8mm						28.2mm	24.8mm	36.5mm	32.5mm		43.6mm
OP(mm)	15.9 ± 0.4	17.4 ± 0.8	28.6 ± 0.8	28.2 ± 0.5	21.5 ± 0.5	21.8 ± 0.8	33.4 ± 1.2	33.4 ± 1.2	19 ± 0.8	19 ± 0.4	30.2 ± 0.8	30.2 ± 0.4	19 ± 0.8	43.1 ± 0.8

## 动作特性 Operating Characteristics

OF: 动作所需之力  
RF: 回复力  
TF: 整个移动所需之力  
FP: 自由位置  
OP: 动作位置  
RP: 回复位置  
TTP: 整个移动之位置  
PT: 至动作为止之移  
OT: 动作后之移动  
MD: 距差  
TT: 整个移动

OF: Operating Force  
RF: Releasing Force  
TF: Total Force  
FP: Free Position  
OP: Operating Position  
RP: Releasing Position  
TTP: Total Travel Position  
PT: Pretravel  
OT: Overtravel  
MD: Movement Differential  
TT: Total Travel

## 外观和尺寸 Appearance and Dimension

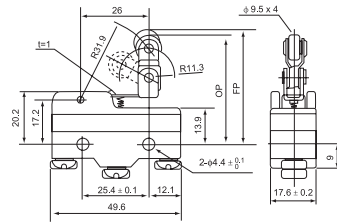
**CM-1701**

**CM-1702**

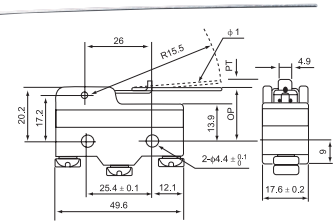
**CM-1703**

**CM-1704**

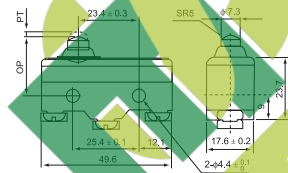
CM-1743



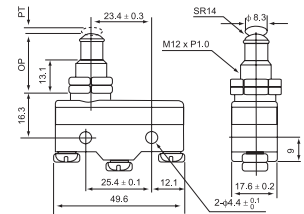
CM-1705



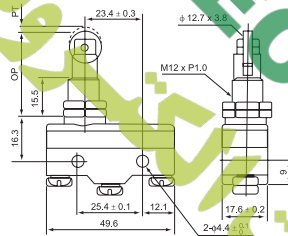
CM-1306



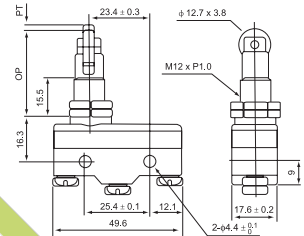
CM-1307



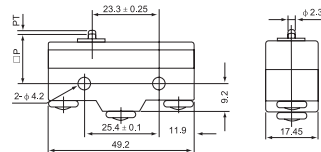
CM-1308



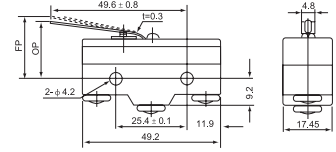
CM-1309



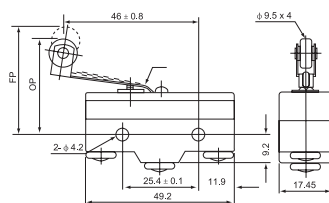
CM-1300



CM-1301



CM-1303



CM-1305

