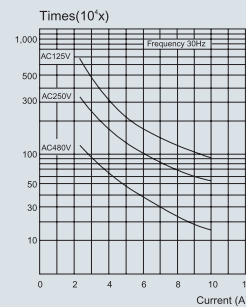


CLS 行程开关 Limit Switch

特征 Features

- 经济塑料型
- 不锈钢滚轮，冲头及弹簧
- 特大 ± 95° 摇臂摆幅
- 可选配PG13.5索头
- Economical & plastic type
- Stainless steel roller, punch and spring
- Swing amplitude, extra large ± 95°
- PG13.5 cable gland that can be equipped

电性寿命图 Electrical Life



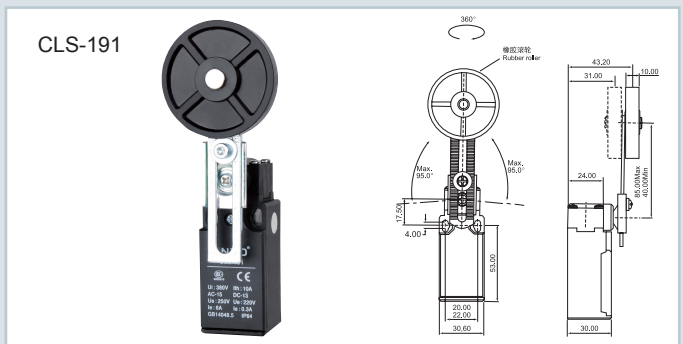
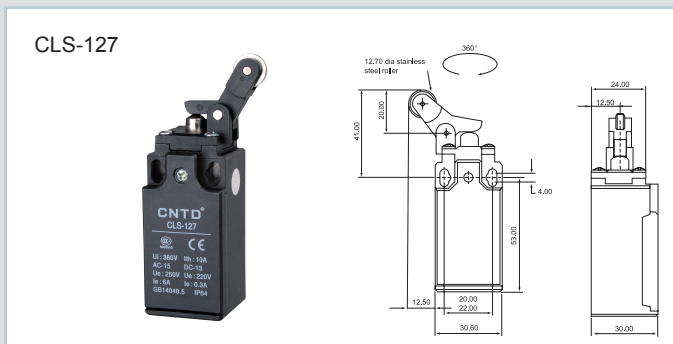
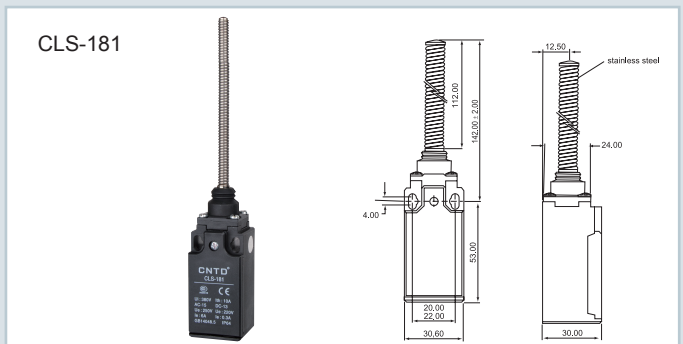
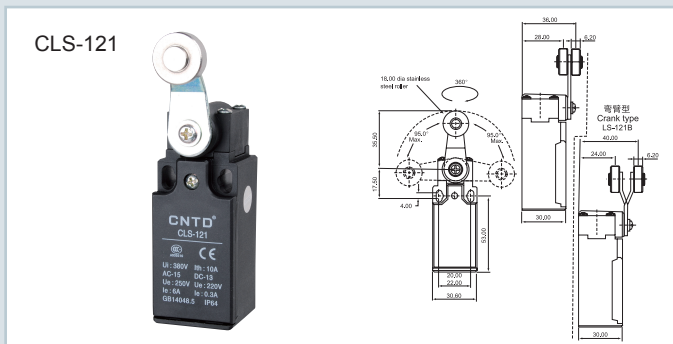
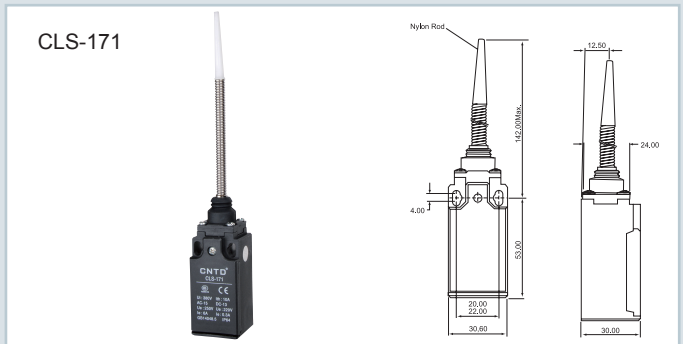
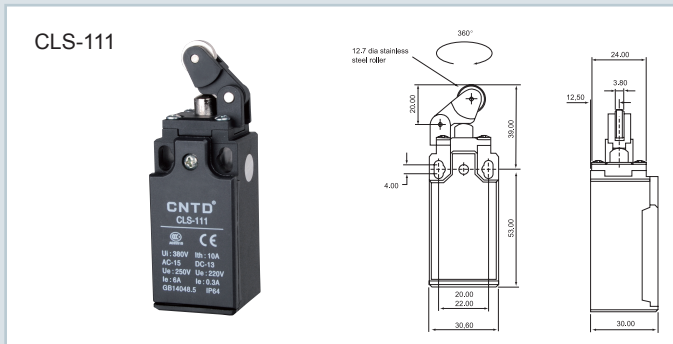
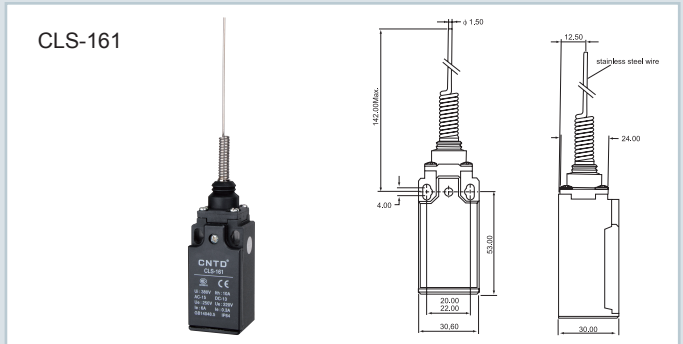
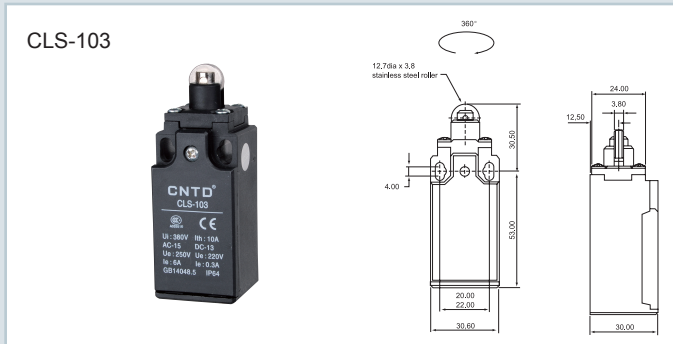
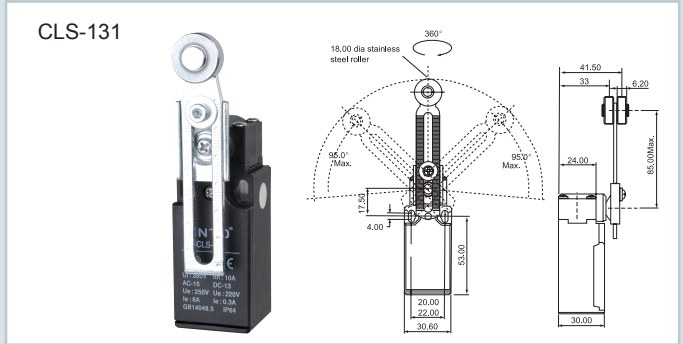
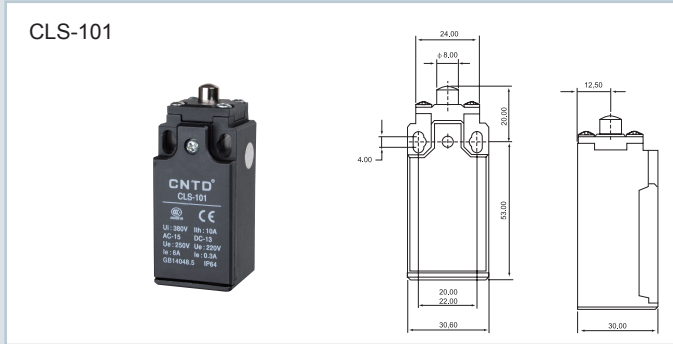
规格 Specification

| 型号 | Model | CLS | 101 | 103 | 111 | 121 | 127 | 131 | 161 | 171 | 181 | 191 |
|---------|-----------------------|---------------|-------|-------|-------|---------|-------|---------|-------|-------|-------|---------|
| | | | 301 | 303 | 311 | 321 | 327 | 331 | 361 | 371 | 381 | 391 |
| 操作力 | Operating force | OF (最大)(Max.) | 700g | 700g | 700g | 500g | 700g | 500g-cm | 100g | 100g | 100g | 500g-cm |
| 回弹力 | Release force | RF (最小)(Min.) | 200g | 200g | 200g | 100g-cm | 200g | 100g-cm | 40g | 40g | 40g | 100g-cm |
| 前预行程 | Pre-travel | PT (最大)(Max.) | 1.8mm | 1.8mm | 1.8mm | 20° | 1.8mm | 20° | 30mm | 30mm | 30mm | 20° |
| 触发位置 | Tripping position | TP ± 10% | 2.0mm | 2.0mm | 2.0mm | 22.5° | 2.0mm | 22.5° | 22.5° | 22.5° | 22.5° | 22.5° |
| 行程移动分辨率 | Movement differential | MD(最大)(Max.) | 1.2mm | 1.2mm | 1.2mm | 10° | 1.2mm | 10° | 14° | 14° | 14° | 10° |
| 触后行程 | Over travel | OT (最小)(Min.) | 4.0mm | 4.0mm | 4.0mm | 75° | 4.0mm | 75° | 20mm | 20mm | 20mm | 75° |
| 累积总行程 | Total travel | TT (最小)(Min.) | 5.8mm | 5.8mm | 5.8mm | 95° | 5.8mm | 95° | 50mm | 50mm | 50mm | 95° |
| 摇臂转动分角度 | Rotary indexing | | | | | 22.5° | | 22.5° | | | | 22.5° |

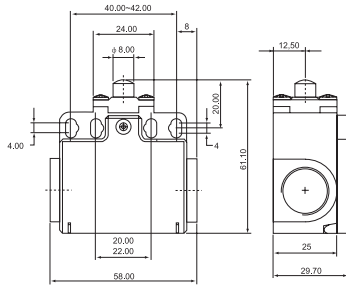
特性 Characteristics

| | | |
|----------|--------------------------------|--|
| 双断开关机械功用 | Double Break Mechanism | INO+INC Force Break snap action强迫断开快速机芯 |
| 额定电压/电流 | Rated Voltage / Current | 10(4)A, 125, 250VAC / 6(2)A, 380VAC For inductance Load, Cos φ = 0.4 |
| 接触电阻 | Contact Resistance | 25mΩ max. (initial value) |
| 绝缘电阻 | Insulation Resistance | 100mΩ min. (at 500VDC) |
| 电介强度 | Dielectric Strength | 1000VAC, 50/60 HZ for 1 minute between terminals of the same polarity |
| | | 1500VAC, 50/60 HZ for 1 minute between current-carrying and non-current-carrying metal parts |
| | | 1500VAC, 50/60 HZ for 1 minute between each terminal and ground |
| 电气寿命 | Electrical Life | 500, 000 at 10A 250VAC Resistive |
| 机械寿命 | Mechanical Life | 10, 000, 000 operations min. (under rated conditions) |
| 操作速度 | Operating Speed | 5mm/s to 0.5m/s |
| 防水防尘能力 | Degree of Protection | IP64 |
| 上升温度 | Ambient Temperature Rised | Max 30°C over ambient temperature at rated voltage/current |
| 合乎标准 | Conformed Standards | Cenelec EN 50041, EN 50047, IEC 337-1, VDE 0660 |
| 操作温度 | Operating Temperature | -5°C ~ +65°C (with no icing) |
| 保存温度 | Storage Temperature | -5°C ~ +65°C (with no icing) |
| 湿度 | Ambient Operating Humidity | 95% RH Max. |
| 冲击系数 | Shock Resistance | Mechanical durable: 1000m/s ² min. |
| | | Malfunction: 300m/s ² min. |
| 振动频率 | Vibration Frequency | Malfunction: 10 to 55Hz 1.5mm double amplitude |
| 端子螺丝扭力 | Terminal Screw Torsional Force | 6-8 kgf-cm |
| 其他螺丝扭力 | Other Screw Torsional Force | Cover 12-14 kgf-cm/Head 8-9 kgf-cm/Mounting 50-60 kgf/cm |
| 裸铜线尺寸 | Bare Wire Diameter | φ 2 Max. |
| 电缆尺寸 | Cable Diameter | φ 12 Max. |

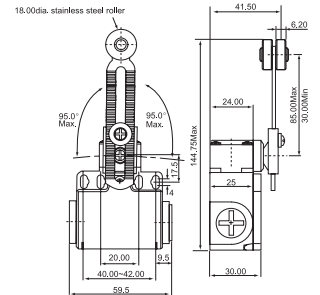
外观和尺寸 Appearance and Dimension



CLS-301

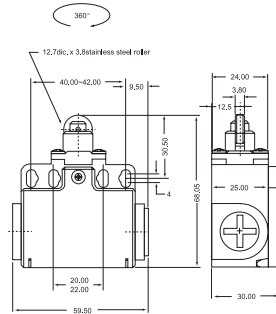


CLS-331

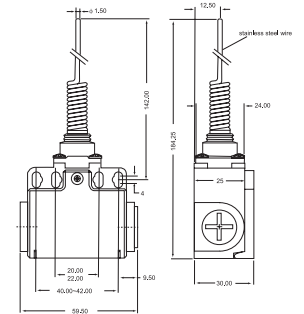


可选配尼龙滚轮 Nylon Roller LSK-331P

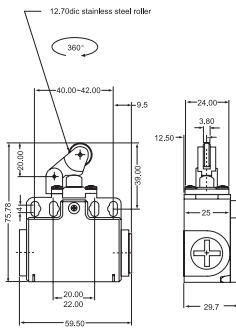
CLS-303



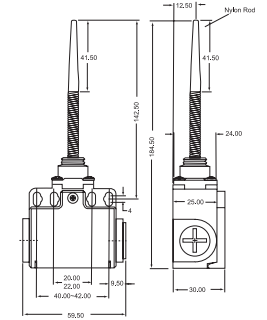
CLS-361



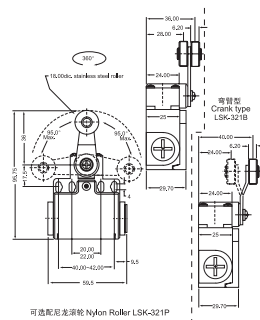
CLS-311



CLS-371

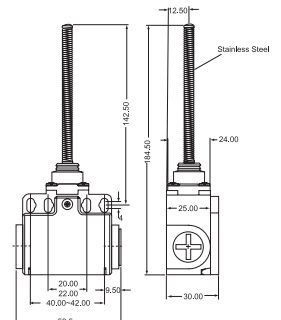


CLS-321

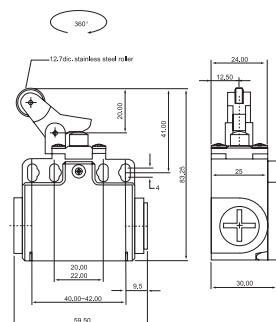


可选配尼龙滚轮 Nylon Roller LSK-321P

CLS-381



CLS-327



CLS-391

