

RDD05U SERIES

DC - DC CONVERTER
4 ~ 6W SINGLE & DUAL OUTPUT



FEATURES

- 2:1 & 4:1 WIDE INPUT RANGE
- I/O ISOLATION
- INPUT P_i FILTER
- SHORT CIRCUIT PROTECTION
- HIGH PERFORMANCE
- UL/cUL/TUV/CE
- 3 YEARS WARRANTY



EN 60950-1

MODEL LIST

MODEL NO.	INPUT VOLTAGE	INPUT CURRENT (typ.)	INPUT CURRENT (max.)	OUTPUT WATTAGE	OUTPUT VOLTAGE	OUTPUT CURRENT	EFF. (min.)	EFF. (typ.)	CAPACITOR LOAD (max.)
Single Output Models									
RDD05 - 03S1U	9~18 VDC	0.52A	0.73A	5 WATTS	+3.3 VDC	1500 mA	79%	81%	2200 μ F
RDD05 - 05S1U	9~18 VDC	0.51A	0.72A	5 WATTS	+ 5 VDC	1000 mA	80%	82%	1500 μ F
RDD05 - 12S1U	9~18 VDC	0.60A	0.83A	6 WATTS	+ 12 VDC	500 mA	83%	85%	270 μ F
RDD05 - 15S1U	9~18 VDC	0.60A	0.83A	6 WATTS	+ 15 VDC	400 mA	83%	85%	180 μ F
RDD05 - 03S2U	18~36 VDC	0.26A	0.36A	5 WATTS	+3.3 VDC	1500 mA	78%	80%	2200 μ F
RDD05 - 05S2U	18~36 VDC	0.25A	0.36A	5 WATTS	+ 5 VDC	1000 mA	80%	82%	1500 μ F
RDD05 - 12S2U	18~36 VDC	0.30A	0.42A	6 WATTS	+ 12 VDC	500 mA	81%	83%	270 μ F
RDD05 - 15S2U	18~36 VDC	0.30A	0.42A	6 WATTS	+ 15 VDC	400 mA	81%	83%	180 μ F
RDD05 - 03S3U	35~75 VDC	0.13A	0.19A	5 WATTS	+3.3 VDC	1500 mA	78%	80%	2200 μ F
RDD05 - 05S3U	35~75 VDC	0.13A	0.18A	5 WATTS	+ 5 VDC	1000 mA	80%	82%	1500 μ F
RDD05 - 12S3U	35~75 VDC	0.15A	0.22A	6 WATTS	+ 12 VDC	500 mA	80%	82%	270 μ F
RDD05 - 15S3U	35~75 VDC	0.15A	0.22A	6 WATTS	+ 15 VDC	400 mA	81%	83%	180 μ F
RDD05 - 03S4U	9~36 VDC	0.22A	0.62A	4 WATTS	+3.3 VDC	1200 mA	75%	77%	2200 μ F
RDD05 - 05S4U	9~36 VDC	0.27A	0.76A	5 WATTS	+ 5 VDC	1000 mA	77%	79%	1500 μ F
RDD05 - 12S4U	9~36 VDC	0.31A	0.87A	6 WATTS	+ 12 VDC	500 mA	80%	82%	270 μ F
RDD05 - 15S4U	9~36 VDC	0.31A	0.87A	6 WATTS	+ 15 VDC	400 mA	80%	82%	180 μ F
RDD05 - 03S5U	18~75 VDC	0.11A	0.31A	4 WATTS	+3.3 VDC	1200 mA	75%	77%	2200 μ F
RDD05 - 05S5U	18~75 VDC	0.13A	0.38A	5 WATTS	+ 5 VDC	1000 mA	77%	79%	1500 μ F
RDD05 - 12S5U	18~75 VDC	0.15A	0.43A	6 WATTS	+ 12 VDC	500 mA	80%	82%	270 μ F
RDD05 - 15S5U	18~75 VDC	0.15A	0.43A	6 WATTS	+ 15 VDC	400 mA	80%	82%	180 μ F
Dual Output Models									
RDD05 - 05D1U	9~18 VDC	0.51A	0.72A	5 WATTS	\pm 5 VDC	\pm 500 mA	80%	82%	\pm 680 μ F
RDD05 - 12D1U	9~18 VDC	0.60A	0.83A	6 WATTS	\pm 12 VDC	\pm 250 mA	82%	84%	\pm 150 μ F
RDD05 - 15D1U	9~18 VDC	0.59A	0.83A	6 WATTS	\pm 15 VDC	\pm 200 mA	83%	85%	\pm 68 μ F
RDD05 - 05D2U	18~36 VDC	0.26A	0.36A	5 WATTS	\pm 5 VDC	\pm 500 mA	79%	81%	\pm 680 μ F

RDD05U SERIES

SINGLE & DUAL OUTPUT

MODEL LIST

MODEL NO.	INPUT VOLTAGE	INPUT CURRENT (typ.) (max.)		OUTPUT WATTAGE	OUTPUT VOLTAGE	OUTPUT CURRENT	EFF. (min.)	EFF. (typ.)	CAPACITOR LOAD (max.)
-----------	---------------	-------------------------------	--	----------------	----------------	----------------	-------------	-------------	-----------------------

Dual Output Models

RDD05 - 12D2U	18~36 VDC	0.30A	0.42A	6 WATTS	± 12 VDC	± 250 mA	81%	83%	± 150 μ F
RDD05 - 15D2U	18~36 VDC	0.31A	0.42A	6 WATTS	± 15 VDC	± 200 mA	80%	82%	± 68 μ F
RDD05 - 05D3U	35~75 VDC	0.13A	0.19A	5 WATTS	± 5 VDC	± 500 mA	80%	82%	± 680 μ F
RDD05 - 12D3U	35~75 VDC	0.15A	0.22A	6 WATTS	± 12 VDC	± 250 mA	81%	83%	± 150 μ F
RDD05 - 15D3U	35~75 VDC	0.15A	0.22A	6 WATTS	± 15 VDC	± 200 mA	80%	82%	± 68 μ F
RDD05 - 05D4U	9~36 VDC	0.27A	0.76A	5 WATTS	± 5 VDC	± 500 mA	77%	79%	± 680 μ F
RDD05 - 12D4U	9~36 VDC	0.31A	0.87A	6 WATTS	± 12 VDC	± 250 mA	80%	82%	± 150 μ F
RDD05 - 15D4U	9~36 VDC	0.31A	0.87A	6 WATTS	± 15 VDC	± 200 mA	80%	82%	± 68 μ F
RDD05 - 05D5U	18~75 VDC	0.13A	0.38A	5 WATTS	± 5 VDC	± 500 mA	77%	79%	± 680 μ F
RDD05 - 12D5U	18~75 VDC	0.15A	0.43A	6 WATTS	± 12 VDC	± 250 mA	80%	82%	± 150 μ F
RDD05 - 15D5U	18~75 VDC	0.15A	0.43A	6 WATTS	± 15 VDC	± 200 mA	80%	82%	± 68 μ F

SPECIFICATION

All Specifications Typical At Nominal Line, Full Load, 25°C Unless Otherwise Noticed

GENERAL							
Characteristics	Conditions	min.	typ.	max.	unit		
Switching frequency	Vi nom, Io nom		280		KHz		
Isolation voltage	Input / Output	1,500			VDC		
Isolation resistance	Input / Output, @ 500VDC	100			M Ω		
Isolation capacitance	100KHz / 1V		1,000		PF		
Ambient temperature	Operating at Vi nom, Io nom	-40		+ 71	°C		
Case temperature	Operating at Vi nom, Io nom			+ 100	°C		
Derating	Vi nom	See derating curve					
Storage temperature	Non operational	-40		+ 100	°C		
Relative humidity	Vi nom, Io nom	20		95	% RH		
Temperature coefficient	Vi nom, Io min			± 0.02	% / °C		
Dimension		L31.8 x W20.3 x H10.2			mm		
MTBF	Bellcore issue 6@40°C, GB		1,120,000		Hours		
Cooling	Free air convection						

INPUT SPECIFICATIONS

Characteristics	Conditions	min.	typ.	max.	unit	
Input voltage range	Ta min ... Ta max, Io nom	2:1	9	12	18	VDC
			18	24	36	VDC
			35	48	75	VDC
		4:1	9	24	36	VDC
			18	48	75	VDC
No load input current	Vi nom, Io = 0	12V		30	mA	
		24V		30	mA	
		48V		20	mA	
Input voltage w/o damage	Io nom	12V		20	VDC	
		24V		40	VDC	
		48V		80	VDC	
Startup voltage	Io nom	12V	8.7		VDC	
		24V	17.4		VDC	
		48V	31.5		VDC	
Input filter	Pi type					

RDD05U SERIES

SINGLE & DUAL OUTPUT

SPECIFICATION

All Specifications Typical At Nominal Line, Full Load, 25°C Unless Otherwise Noticed

OUTPUT SPECIFICATIONS						
Characteristics	Conditions		min.	typ.	max.	unit
Output voltage accuracy	Vi nom, Io nom				± 2	%
Minimum load	Vi nom	single output models	0			%
		dual output models (each output)	10			%
Line regulation	Io nom, Vi min ...Vi max				± 0.5	%
Load regulation	Vi nom, Io 0 ...Io nom	single output models			± 0.5	%
		dual output models			± 1	%
Cross regulation (Dual model)	Aymmetrical load 10% - 100% FL				± 5	%
Startup time	Vi nom, Io nom				700	ms
Transient recovery time	Vi nom, I~0.5 Io nom				1	ms
Ripple & noise	Vi nom, Io nom, BW = 20MHz				50	mV
Efficiency	Vi nom, Io nom, Po / Pi		Up to 85%, See model list and efficiency curve			

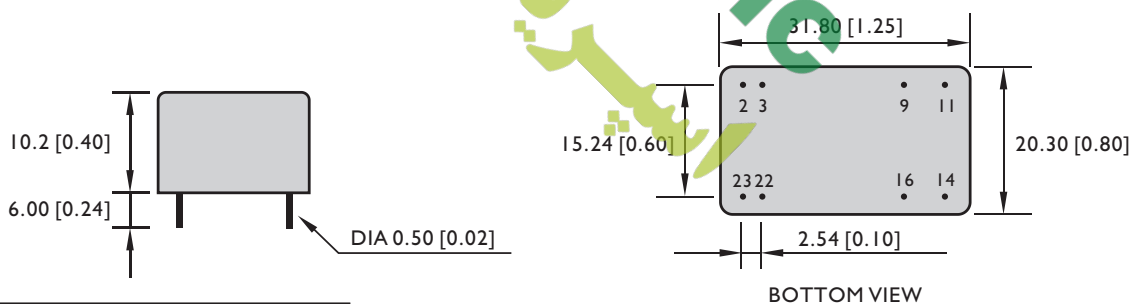
CONTROL AND PROTECTION	
Input reversed	Shunt diode built in, external fuse recommended 1A
Output short circuit	Current limited (Auto-recovery)
Rated over load protection	110%min...140%max

APPROVALS AND STANDARD	
UL/cUL	UL 60950-1 Recognized
TUV	EN 60950-1
CE	EN 61204-3, EN 55022, Class A, EN 61000-4-2, EN61000-4-3, EN61000-4-4, EN61000-4-6
Vibration	meet IEC 60068-2-6 (10-500 Hz, 2G, along X, Y, Z, each Axis, 60 min for each Axis)

PHYSICAL CHARACTERISTICS	
Case size	31.8 x 20.3 x 10.2 mm (1.25 x 0.8 x 0.4 inches)
Case material	Plastic base / Metal case
Weight	18 g
Potting material	Silicone

MECHANISM & PIN CONFIGURATION

mm [inch]



GENERAL TOLERANCE	
0.00[0.00] - 30.00[1.18]	±0.30[0.01]
30.00[1.18] - 120.00[4.72]	±0.50[0.02]

PIN ASSIGNMENT

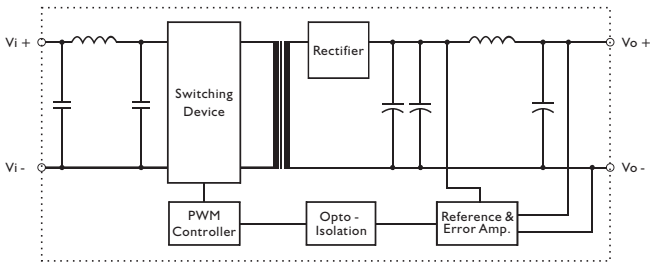
GENERAL							
PIN NO.	2 & 3	9	11	14	16	22 & 23	
SINGLE	Vi -	N. C.	N. C.	Vo+	Vo -	Vi+	
DUAL	Vi -	com	Vo -	Vo+	com	Vi+	

RDD05U SERIES

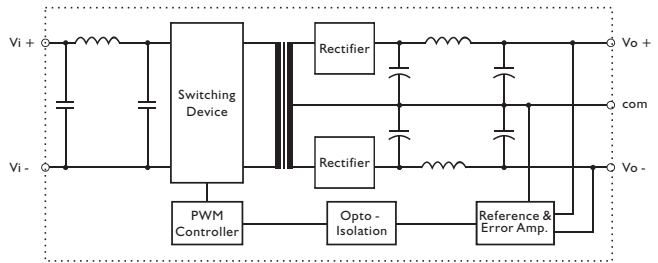
SINGLE & DUAL OUTPUT

CIRCUIT SCHEMATIC

• Block diagram for RDD05U series with single output

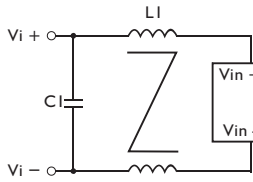


• Block diagram for RDD05U series with dual output

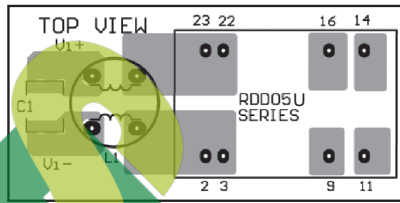


RECOMMENDED CIRCUIT

• Recommended filter for EN55022 Class B compliance



• Recommended EN 55022 Class B filter circuit layout.

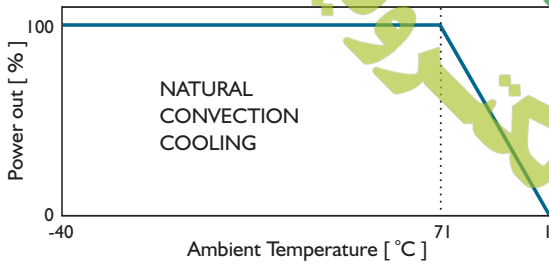


• The components used in the above figure, together with the manufacturer part numbers for these components, are as follows.

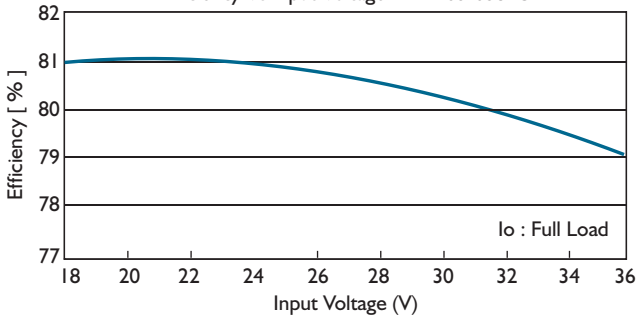
	CI	LI
RDD05-XXX1U	2.2 μ F / 50V MLCC	1.5mH common choke
RDD05-XXX2U	2.2 μ F / 50V MLCC	1.5mH common choke
RDD05-XXX3U	2.2 μ F / 100V MLCC	1.5mH common choke
RDD05-XXX4U	2.2 μ F / 50V MLCC	1.5mH common choke
RDD05-XXX5U	2.2 μ F / 100V MLCC	1.5mH common choke

DERATING AND EFFICIENCY CURVE

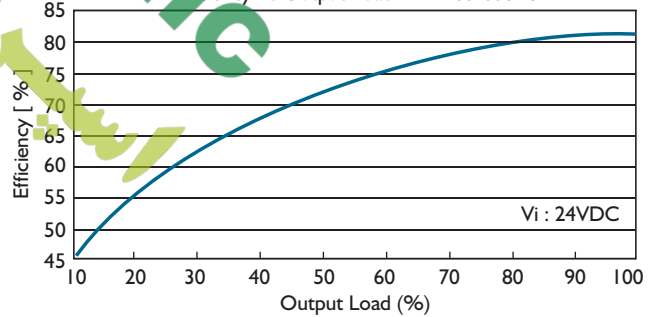
Temperature derating curve



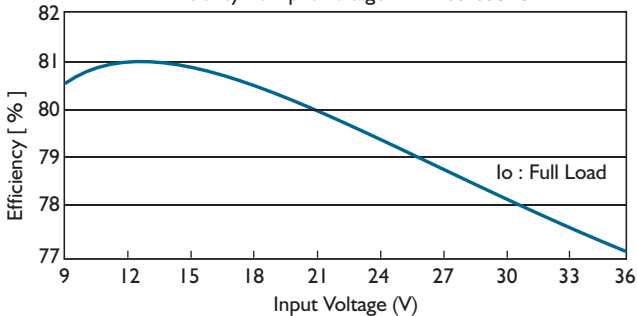
Efficiency Vs Input Voltage RDD05-05S2U



Efficiency Vs Output Load RDD05-05S2U



Efficiency Vs Input Voltage RDD05-05S4U



Efficiency Vs Output Load RDD05-05S4U

